



**Organizational Chart  
FY 2025**

# Revision History

## FY 25

Date Approved	Dept. / Pgm.	Pg.	Revision
10-03-24	Acute Care	15	1. Realigned WC/IV Staff and oversight from Acute Care to Primary Care.
10-3-24	Primary Care	14	1. Realigned the IV/Wound Care staff and clinic oversight as a direct report to the Primary Care Manager. a. Clinical Nurse (WC/IV) (2.0 FTE) b. CNA (WC/IV) (1.0 FTE)
10-24-24	Providers	7	1. Change Dr. Schindler from PCC Provider to PCC Provider/Medical Director 2. Realign the Primary Care Providers to report directly PCC Provider/Medical Director
10-24-24	Providers	7	1. Change Dr. Isreal from Acute Care Provider to Acute Care Provide/ED Medical Director 2. Realign ED Providers to report directly to the Acute Care Provider/Medical Director 3. Add Trauma Program Medical Director position
10-24-24	Clinical Services	6	1. Change Primary Care Providers to Primary Care Provider/Medical Director 2. Change Acute Care Providers to Acute Care Provider/Medical Director
11-07-24	Pharmacy	8	1. Decrease Pharmacy Tech positions from 2 to 1 2. Add a new position, Pharmacy Aide, as a direct report to Pharmacy Director. 3. Added Pharmacist PRN Pool
11-07-24	Providers	7	1. Added Physician PRN Pool 2. Added Advanced Practice Providers (APP) PRN Pool
11-07-24	Radiology	9	1. Added Radiology Technician PRN Pool
11-07-24	Rehabilitation Services	11	1. Added Chiropractor PRN Pool
11-07-24	Nutrition and Food Services	12	1. Added Dietician PRN Pool 2. Added Cook PRN Pool
11-07-24	Acute Care-Nursing	15	1. Added ED Clinical Nurse PRN Pool

# Revision History (cont'd)

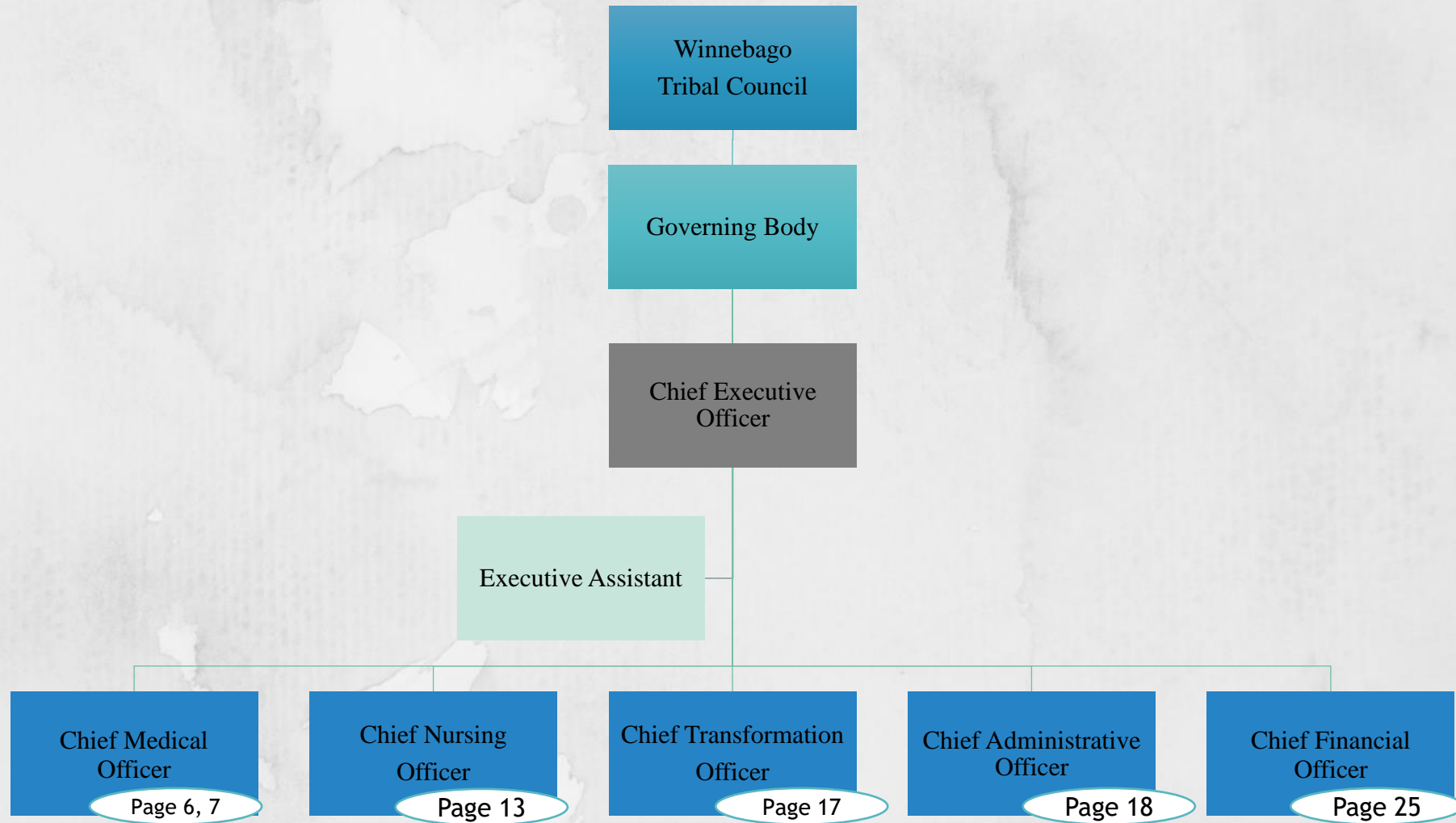
## FY 25

Date Approved	Dept. / Pgm.	Pg.	Revision
11-07-24	WCHS Revenue Cycle	26	1. Added Technician – Scanner PRN Pool
11-21-24	WCHS Physical Environment	20	1. Added a new position, Administrative Engineering Technician, as a direct report to the Environment of Care Director 2. Restructured the departmental chart.

## Table of Contents

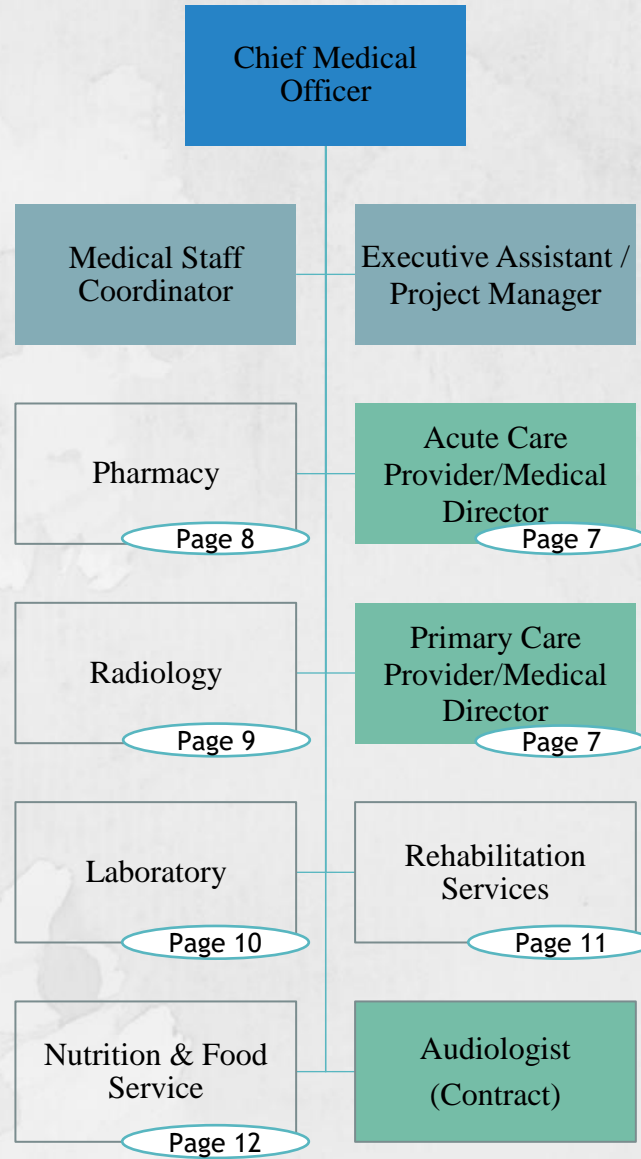
Executive Leadership	5
Clinical Services	6
Providers	7
Pharmacy	8
Radiology	9
Laboratory	10
Rehabilitation Services	11
Nutrition and Food Service	12
Nursing Administration	13
Primary Care – Nursing	14
Acute Care – Nursing	15
Case Management	16
WCHS Chief Transformation Officer	17
WCHS Support Services	18
WCHS Human Resources	19
WCHS Physical Environment	20
WCHS Supply Chain Services	21
WCHS Purchased & Referred Care	22
WCHS Planning & Development	23
WCHS Communications	24
WCHS Financial Management	25
WCHS Revenue Cycle	26

## Executive Leadership

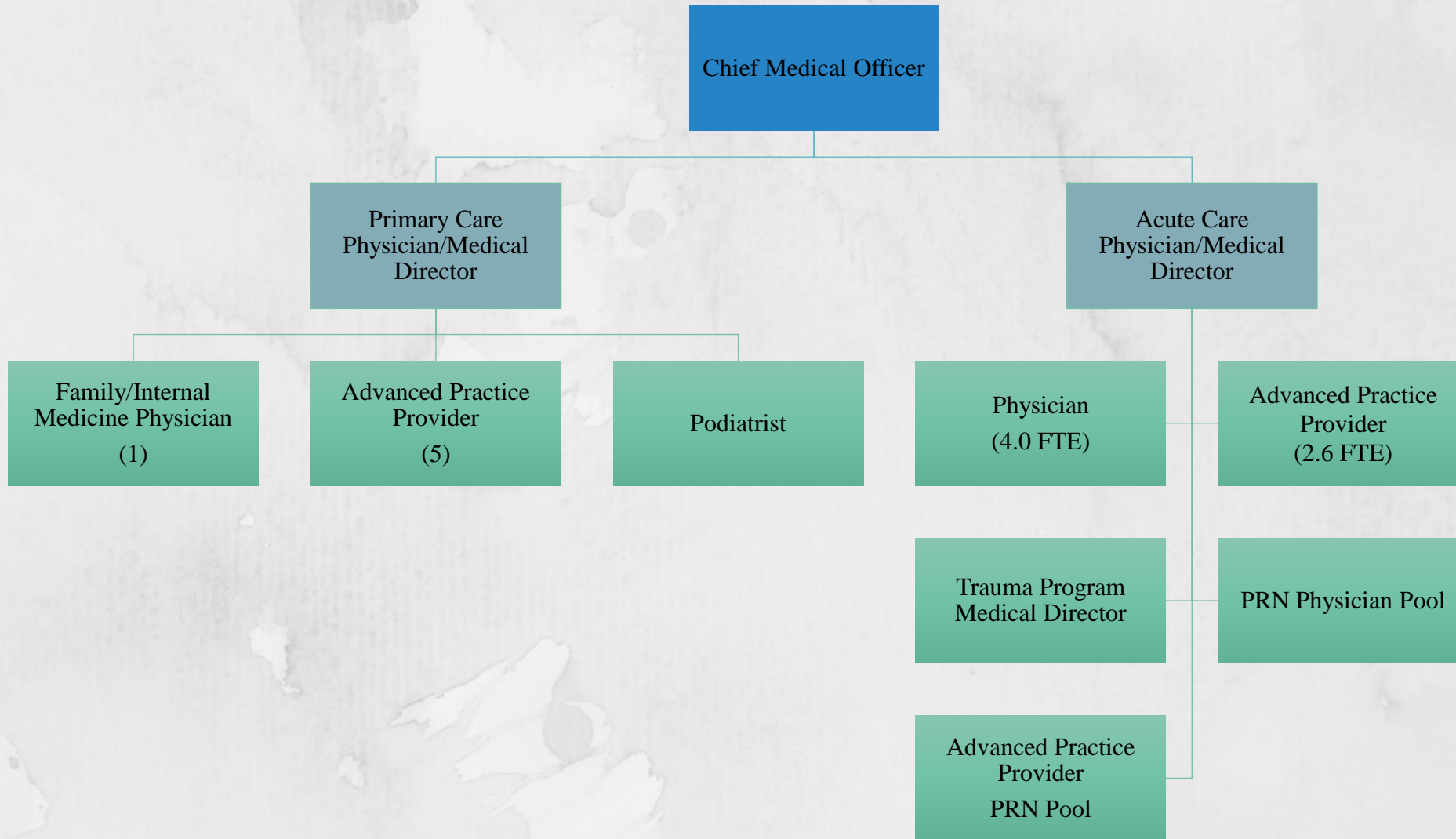




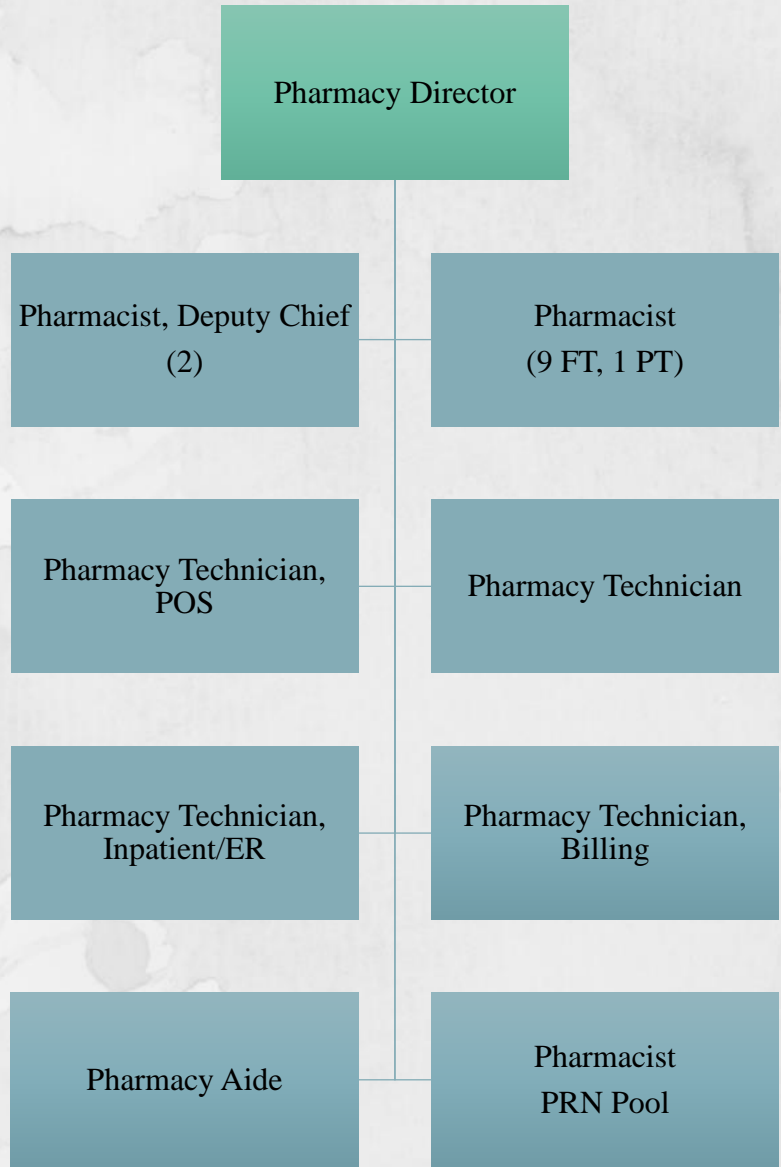
Clinical Services



**Providers**

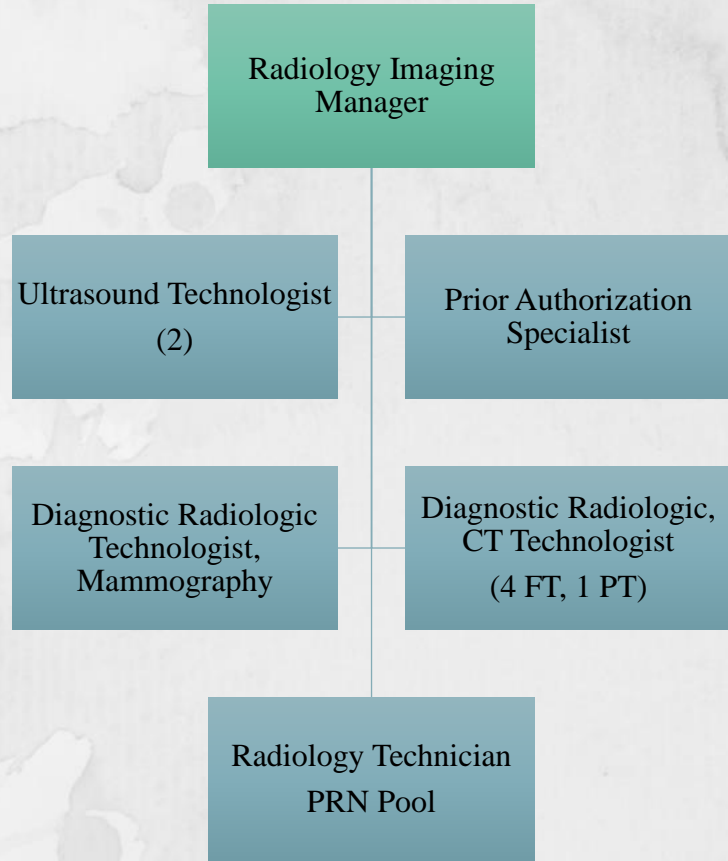


**Pharmacy**

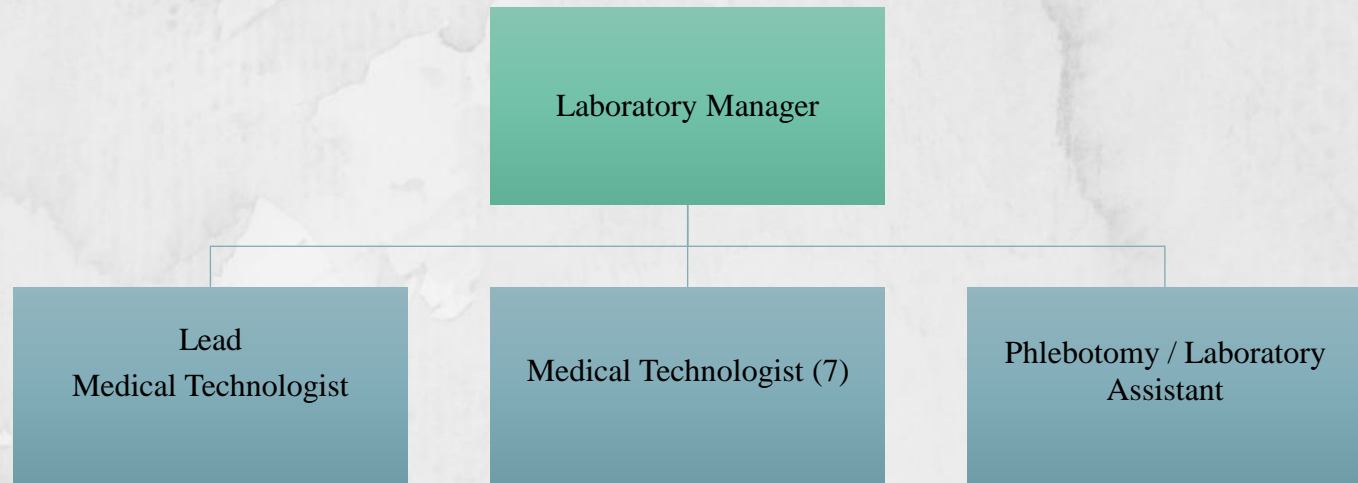




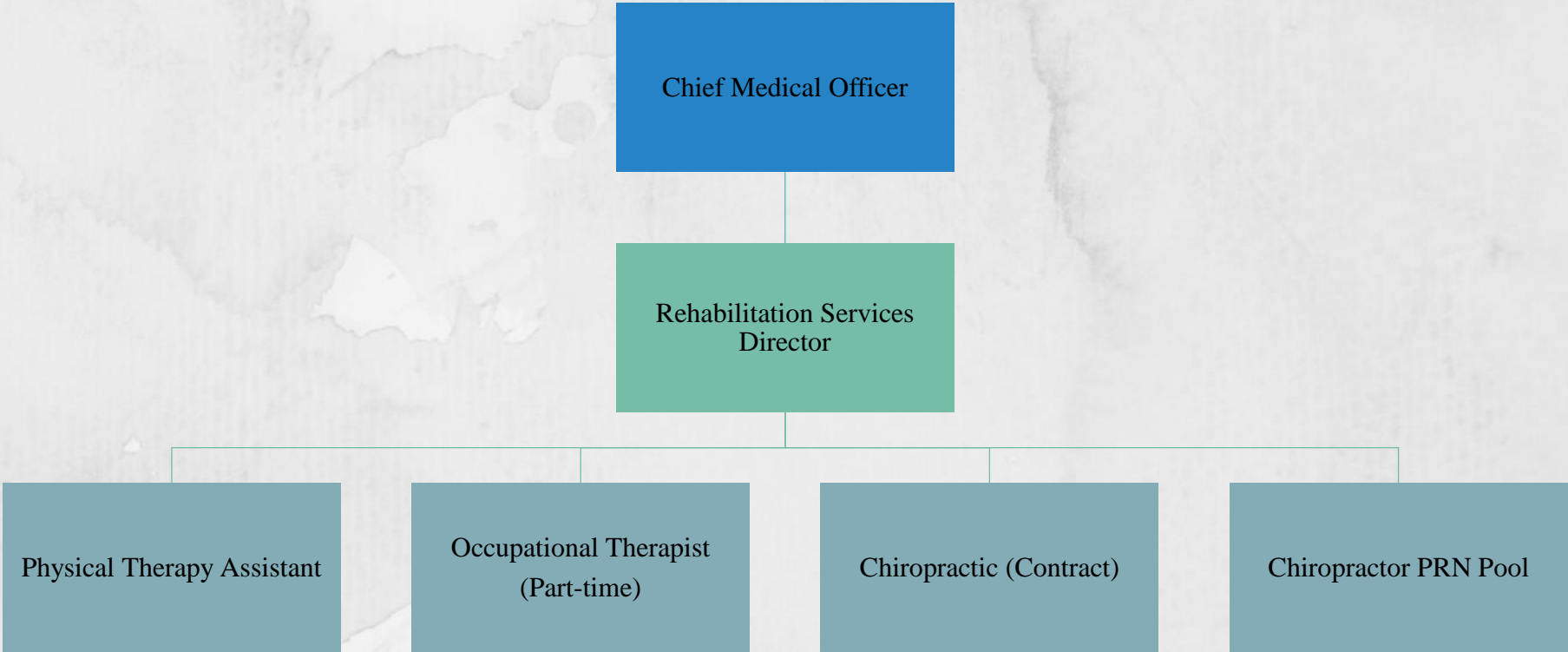
**Radiology**



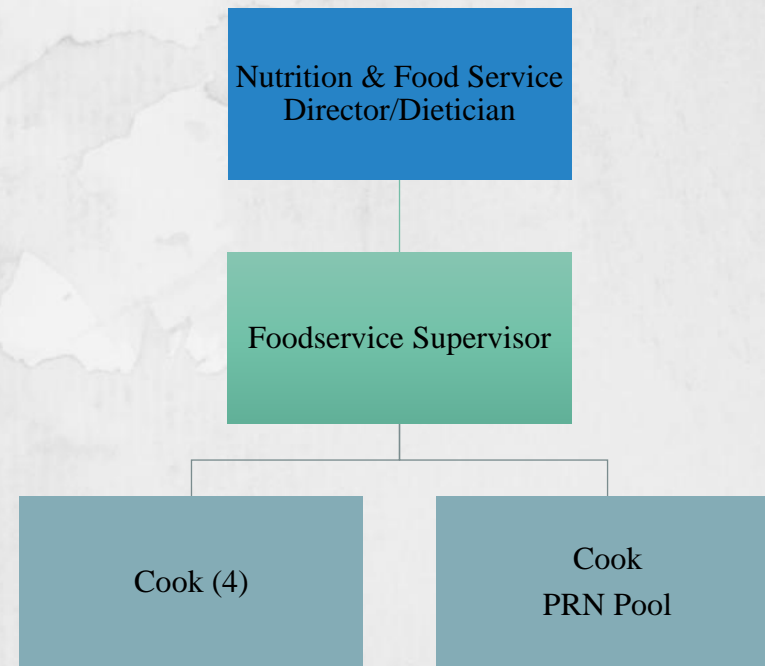
**Laboratory**



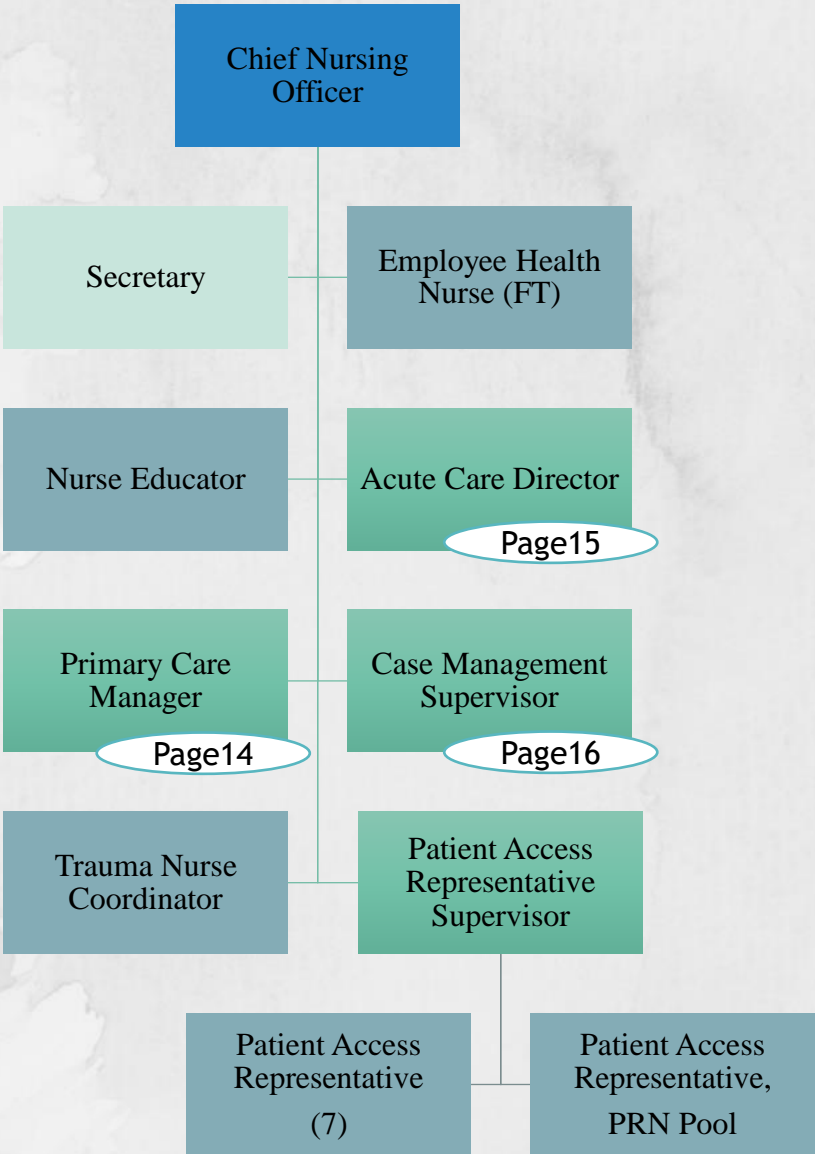
**Rehabilitation Services**



**Nutrition and Food Service**

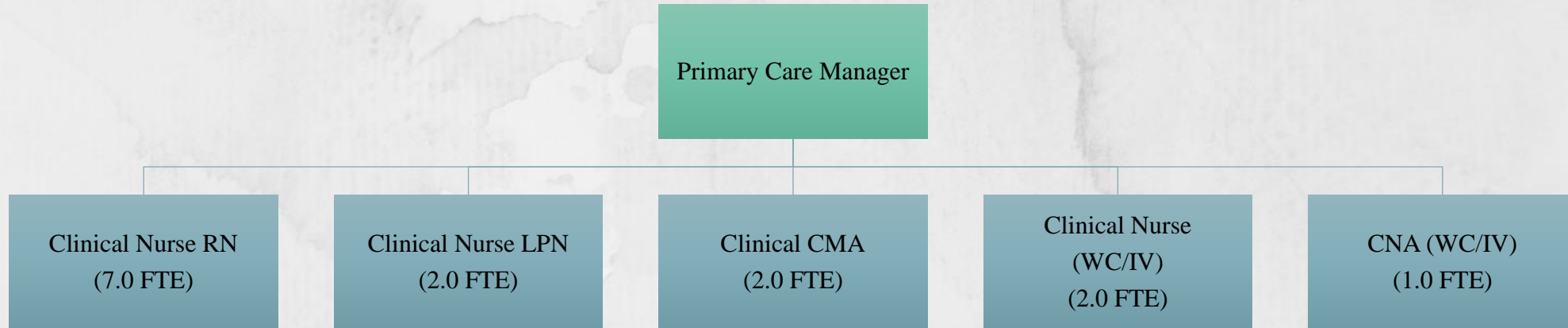


**Nursing Administration**



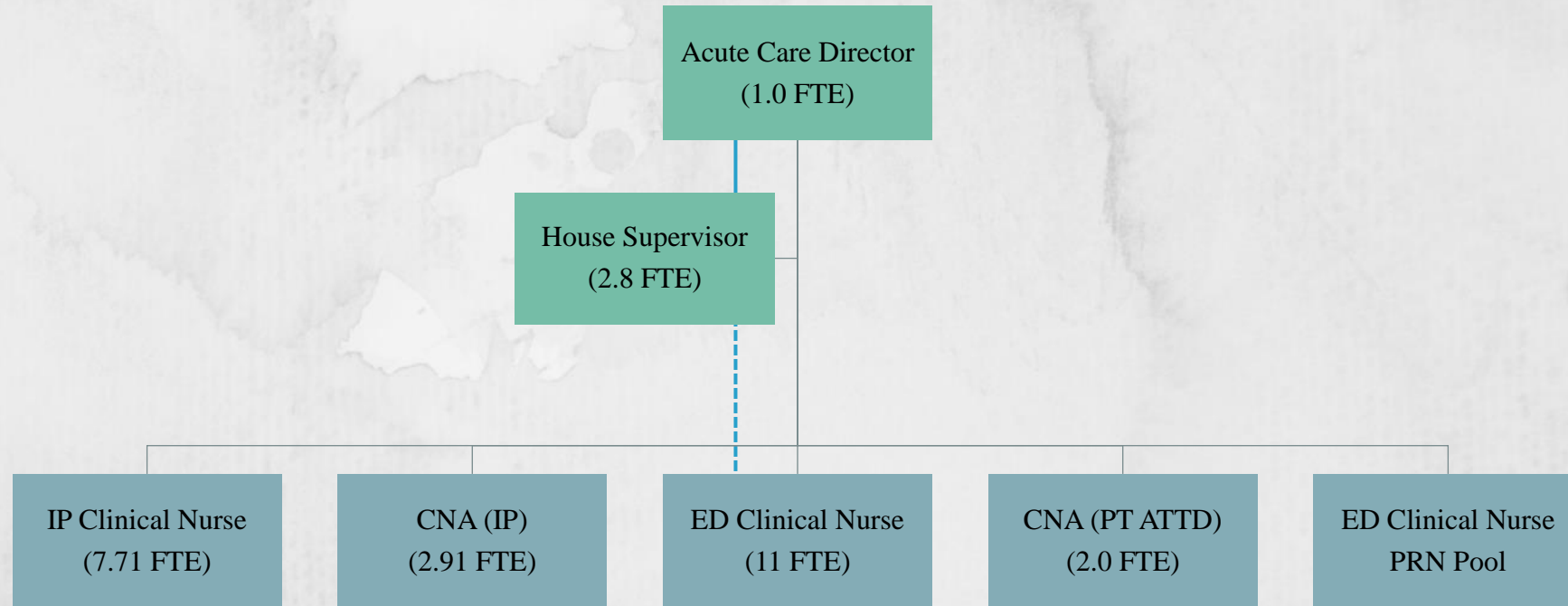


**Primary Care - Nursing**



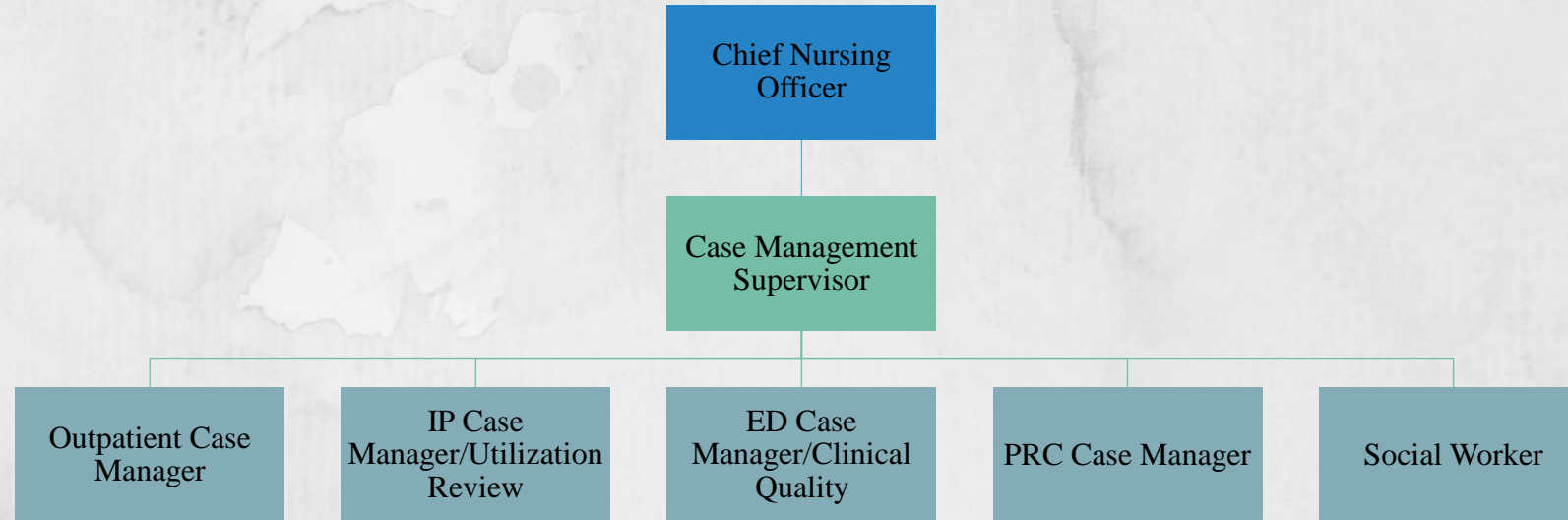
Approved: October 3, 2024

**Acute Care-Nursing**



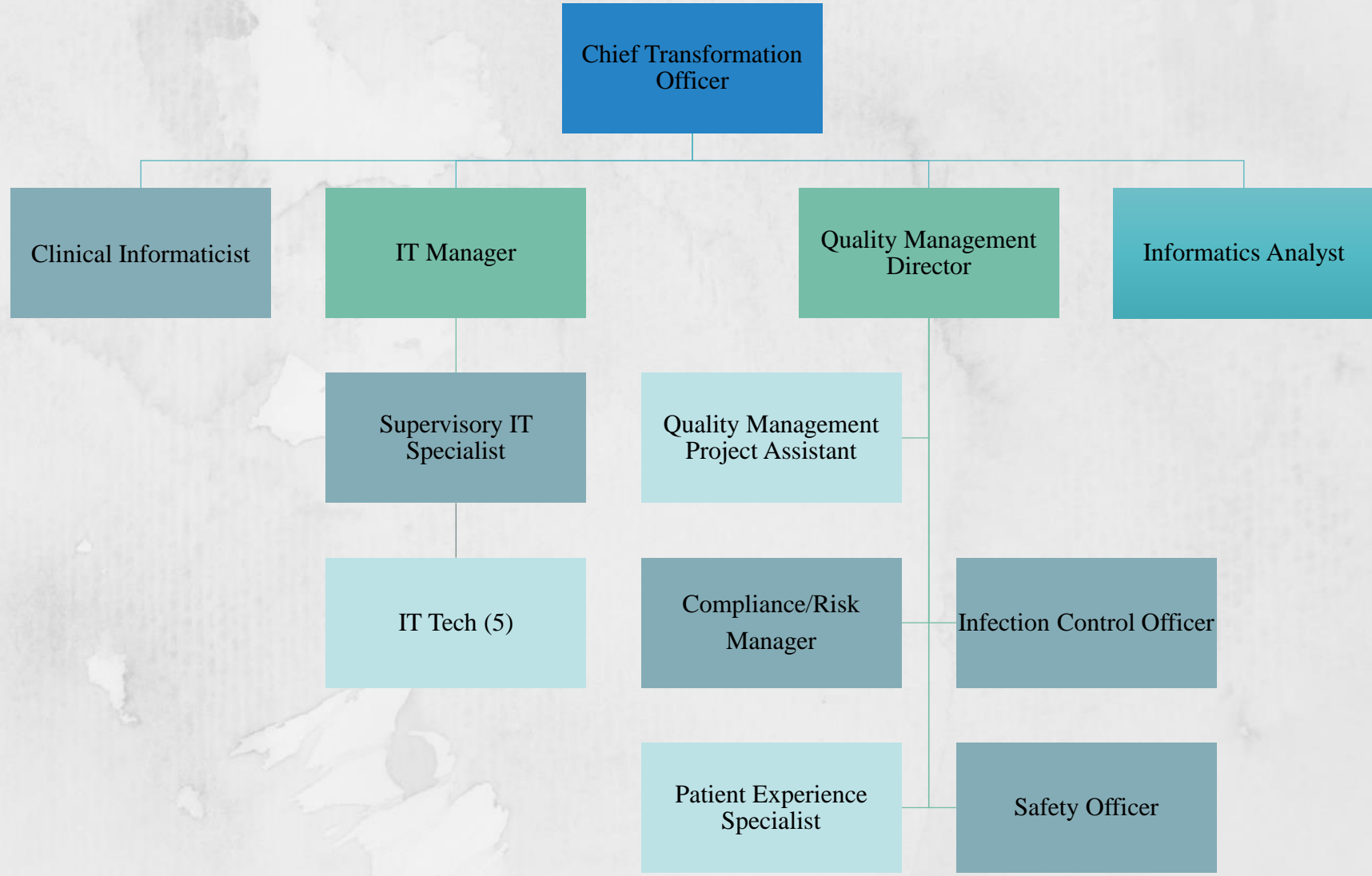
Approved: November 7, 2024

## Case Management

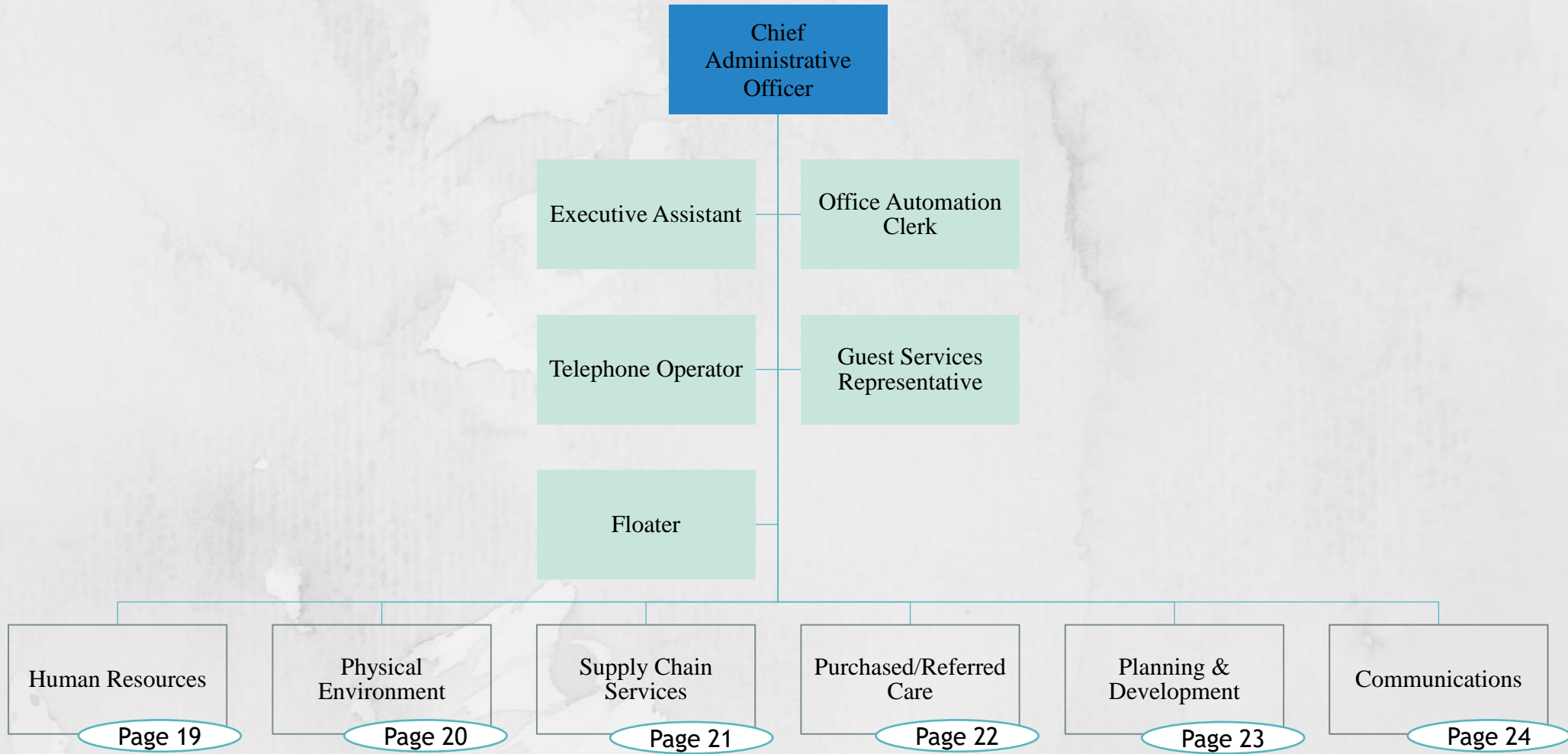


Approved: September 1, 2022

**WCHS Chief Transformation Officer**



**WCHS Support Services**



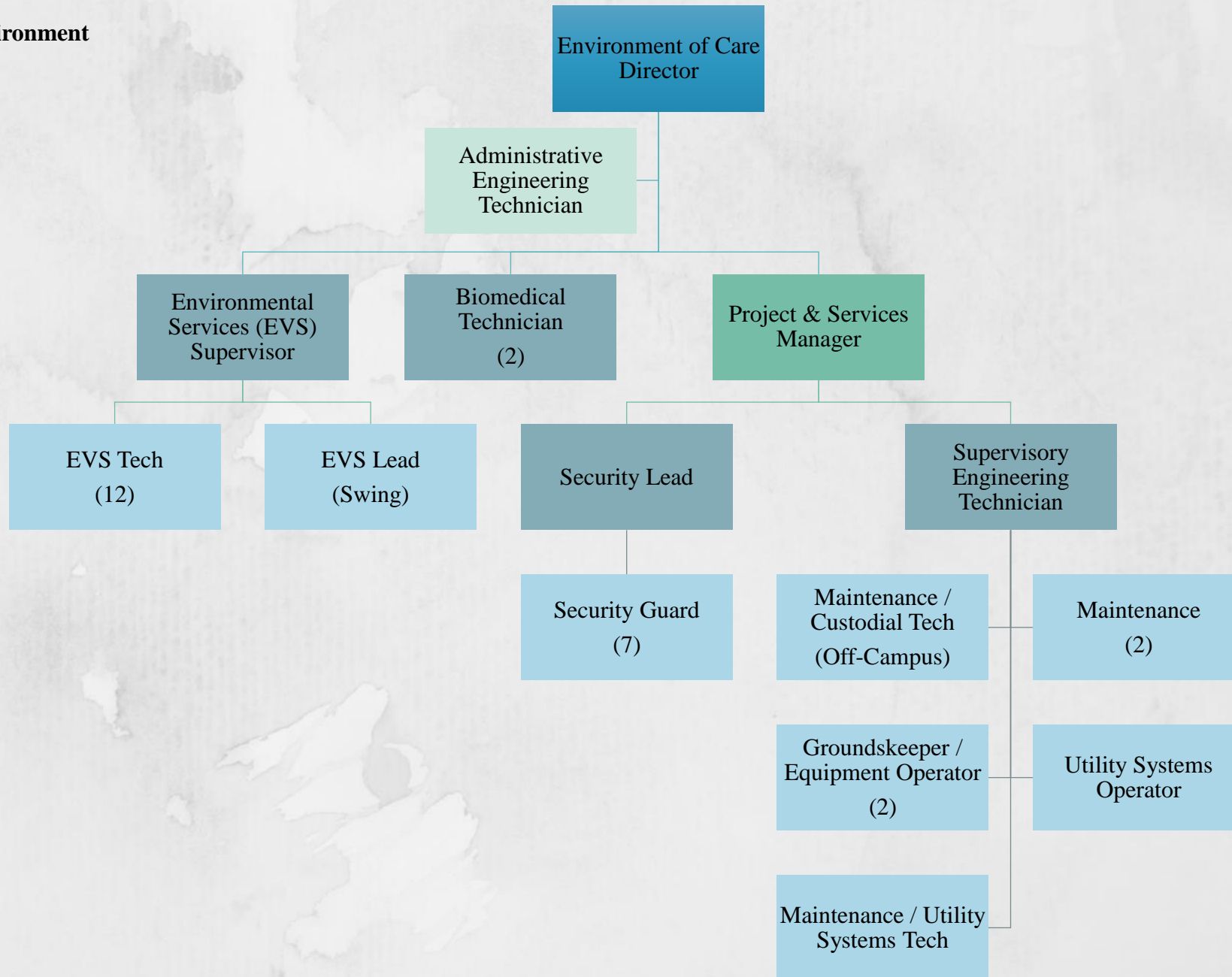


**WCHS Human Resources**



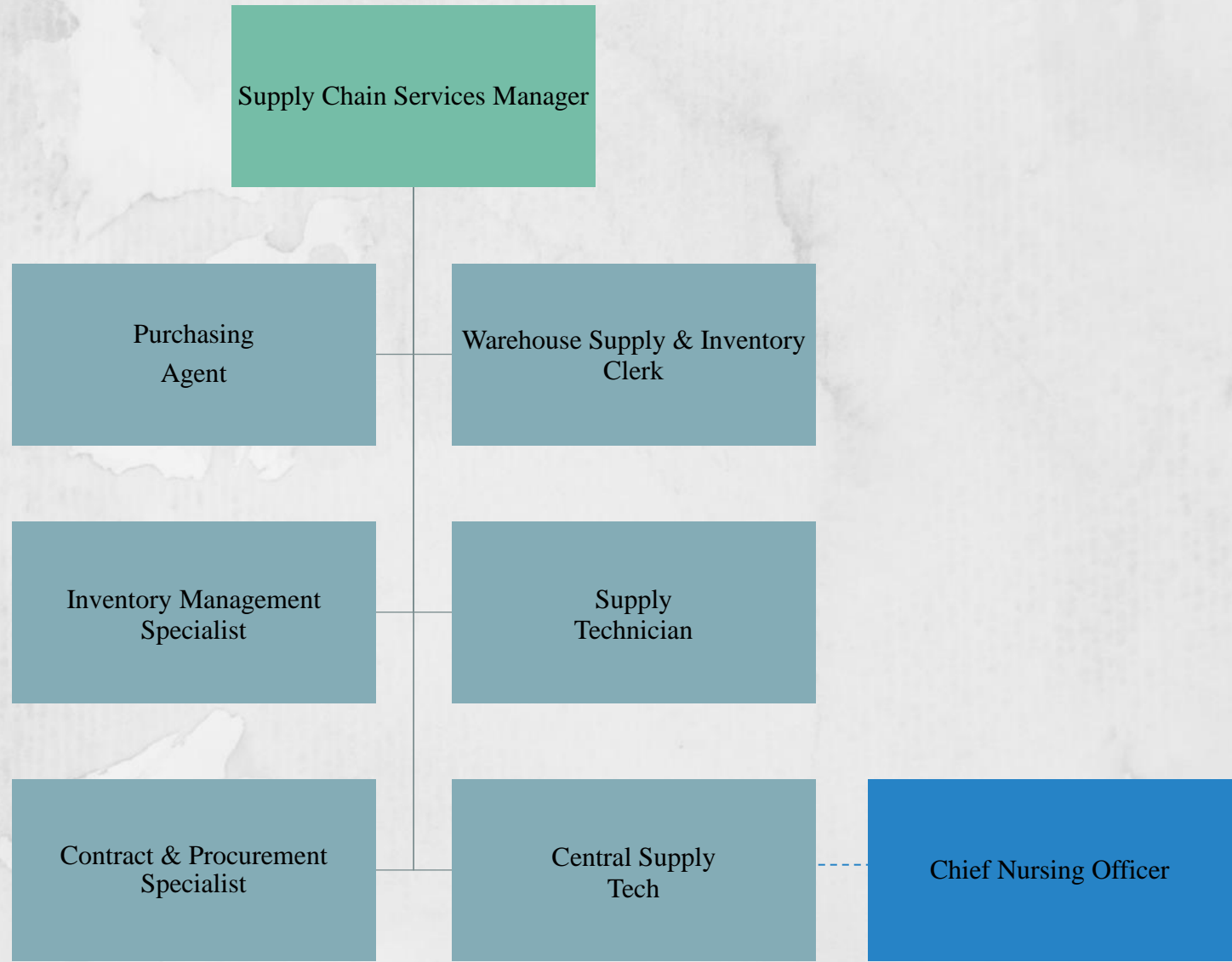
Approved: April 18, 2024  
Approved: October 19, 2023

**WCHS Physical Environment**



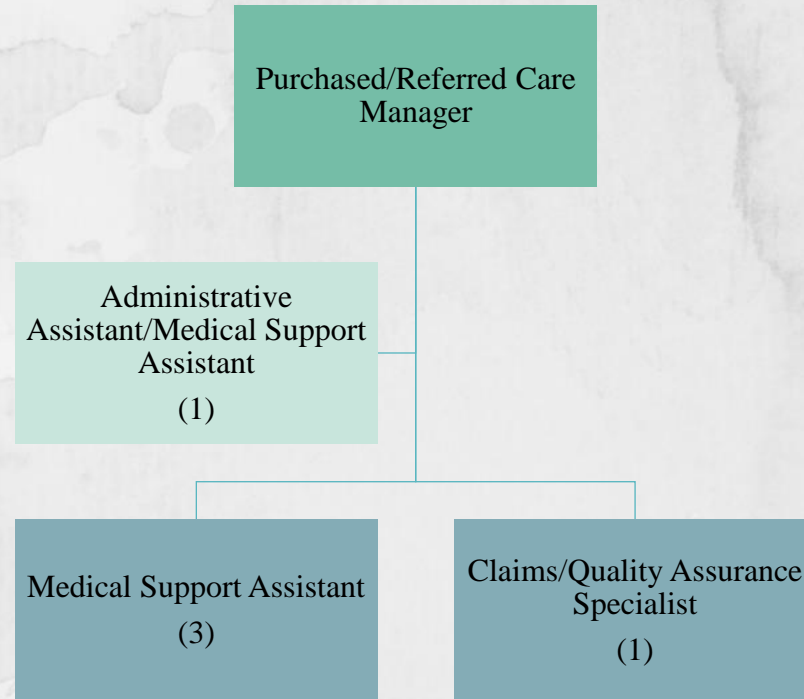
Approved: November 21, 2024

# WCHS Supply Chain Services

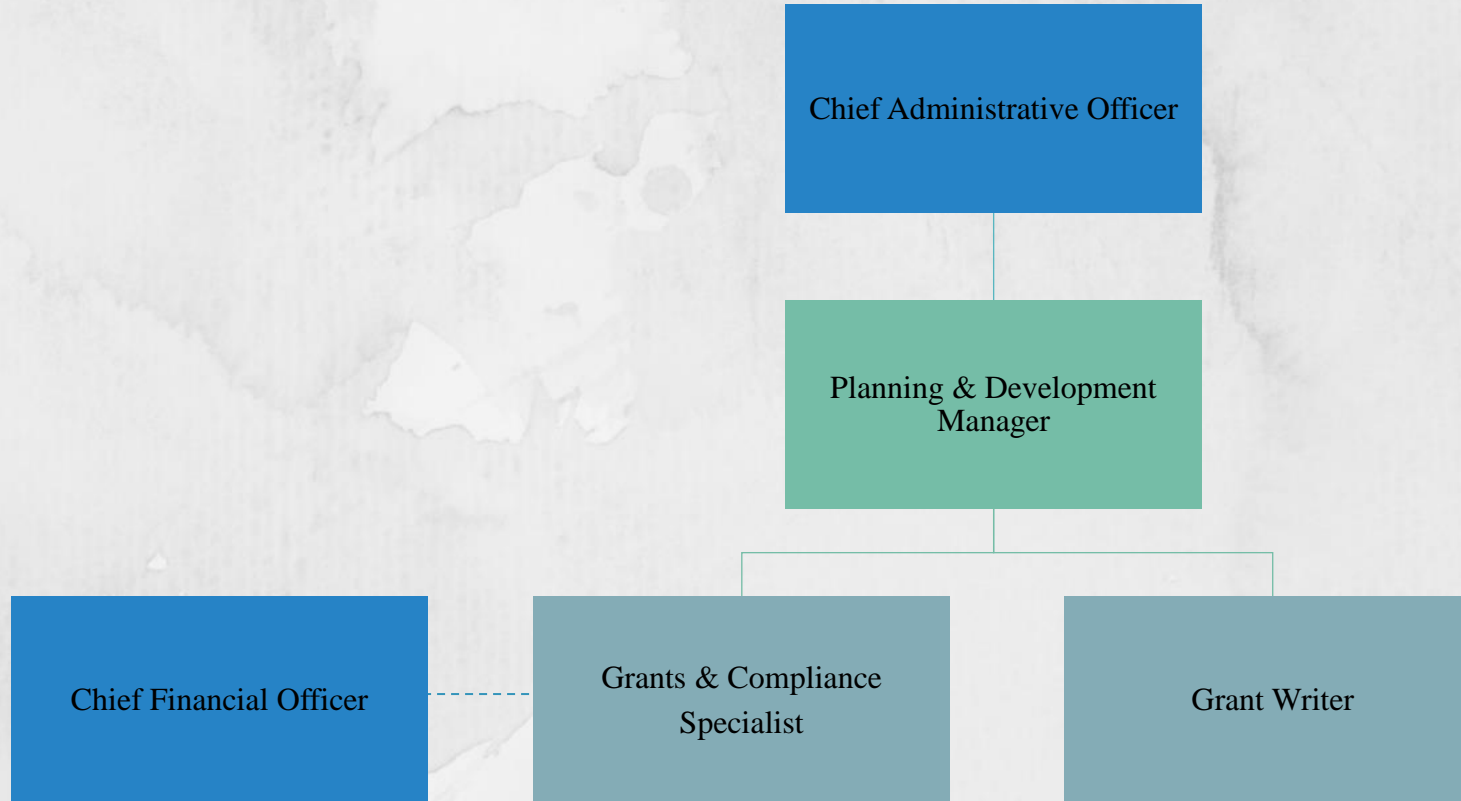


Approved: October 21, 2021

**WCHS Purchased /Referred Care**

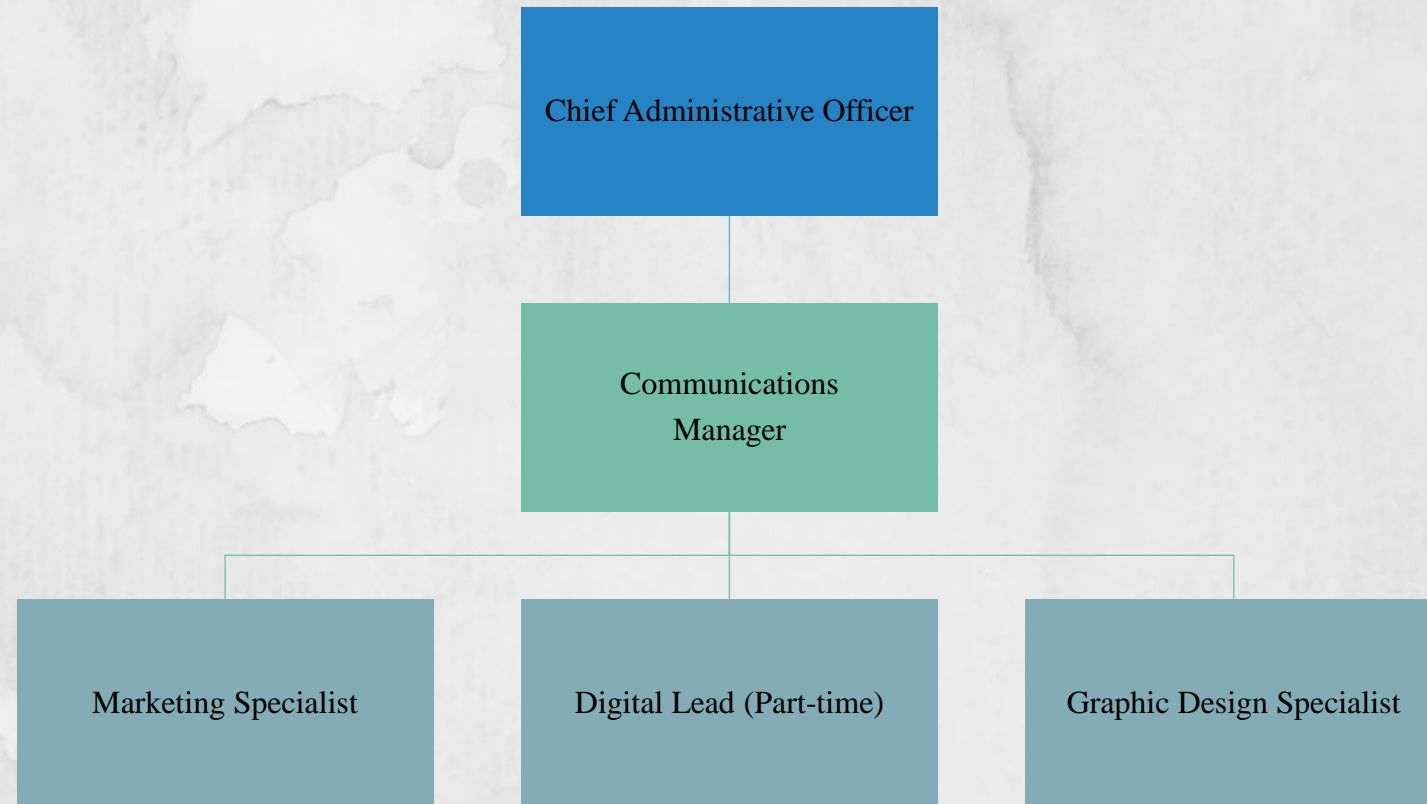


**WCHS Planning & Development**

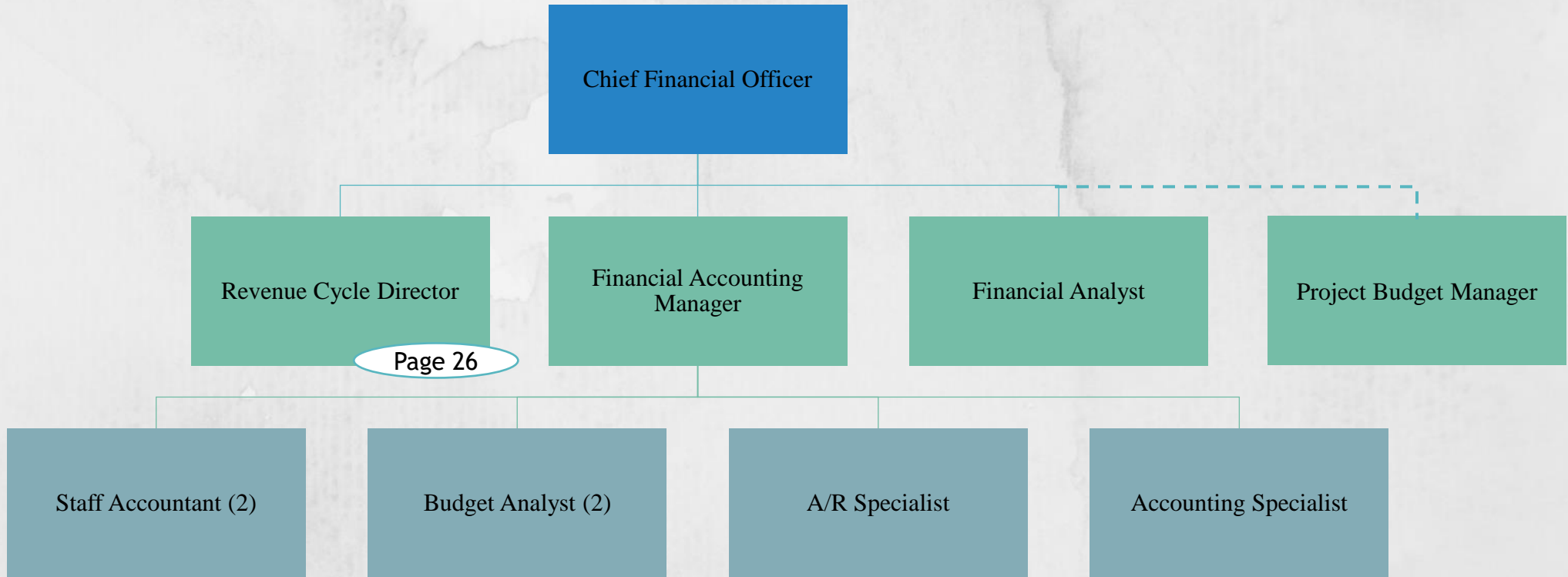




**WCHS Communications**



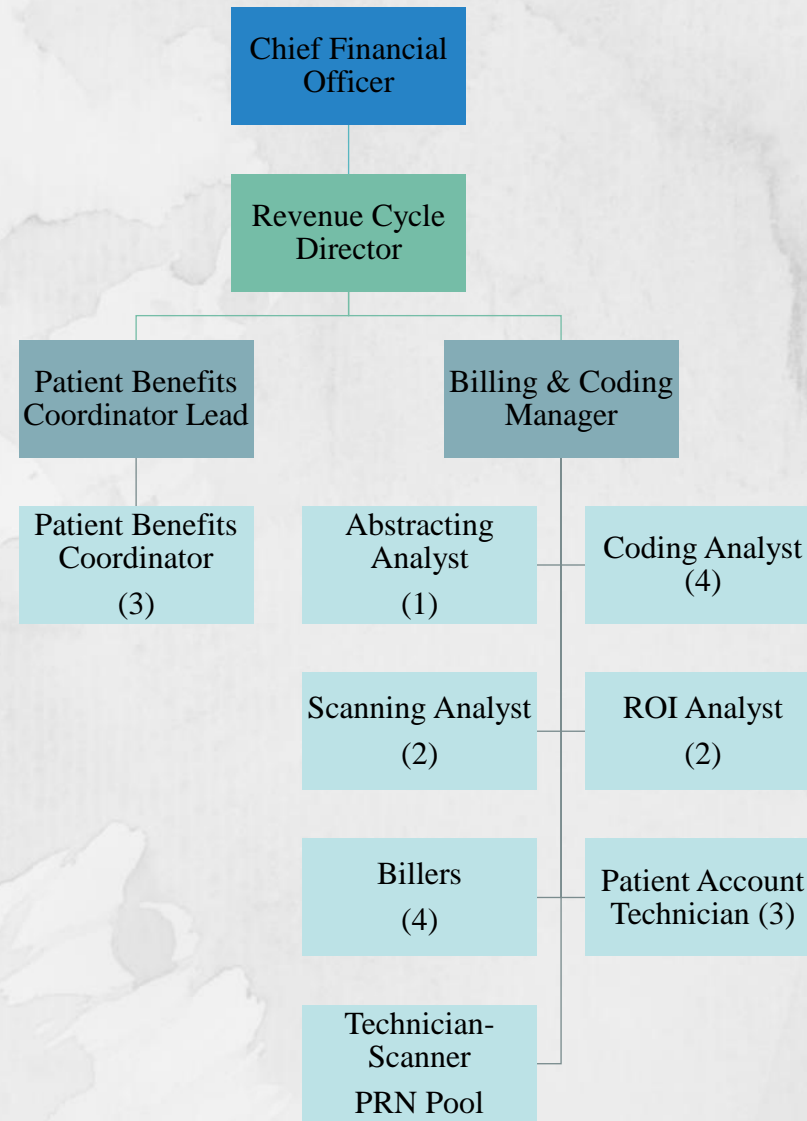
**WCHS Financial Management**



Page 26

Approved: January 4, 2024  
Approved: March 7, 2024

# WCHS Revenue Cycle



Approved: November 7, 2024